

Part I: Beyond the Scenery, Setting the Stage for 2020s

What needs to be done to assure sustainability of our native plant gardens and Wild Ones Twin Cities?

That's the question our chapter leaders have revisited the past several years. We are healthy, and as the movement for gardening with native plants continues to grow the need for Wild Ones educational programs has never been more relevant. As a non profit, educational organization, Wild Ones national and Wild Ones Twin Cities chapter are doing all we can to keep up with the demand.

That's a good thing, right?

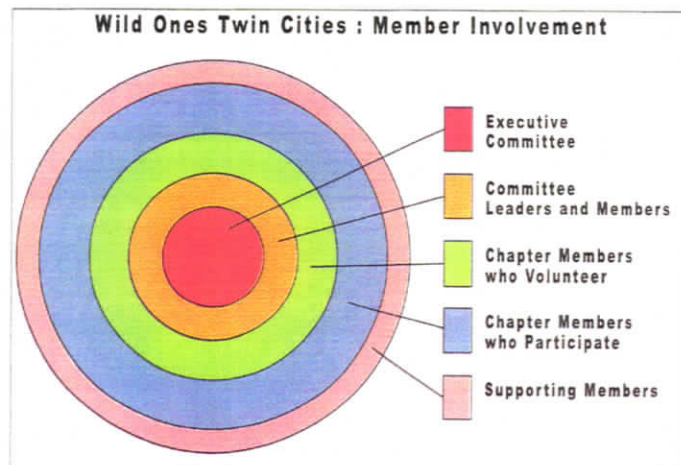
When our chapter chartered back in 2001, the leaders built the foundation for Wild Ones to grow in the Twin Cities metro area. Soon we were joined by St Croix Oak Savanna (Stillwater), Northfield Prairie Partners and in the past six years we have split off two new chapters, Prairie Edge (2013) and Big River Big Woods (2015). All of these chapters expand our reach into the greater Minnesota gardening community.

How do we maintain growth and keep passion alive without volunteer burnout?

As an all volunteer organization, our leaders each give of their personal time to perform all the duties of managing chapters. We've taken a step back from pursuing any new ideas in 2019 to review our structure and be sure we can maintain our current activities.

Part I is already underway!

A special focus committee has met several times to lay the groundwork for restructuring our board of directors, identifying primary committees and outlining responsibilities of each committee. Ideally, we would like to have at least 25% of our members participating as leaders, committee members and volunteers. This chart is a simplified example of how that might look.



Steps we have taken to achieve our goals

In June we met with a professional consultant to gain insights into how other non-profit organizations manage to deliver strong programs and keep members involved at all levels. We wanted to learn more about how to engage members, regardless of level of experience. To do this we've begun to ask for member participation such as: to be greeters at a meeting, to table an event, to serve on a committee or take on a leadership position. Each member who helps makes it easier for leaders to focus on the big picture: sustaining our membership base while continuing to grow and educate the public on the benefits of gardening with native plants.

Where do you fit in?

We are thrilled to have such a passionate group of leaders taking the time to strengthen our chapter so we can continue to help educate members of our communities on the values of native plants. We would very much like all of our members to be involved to some degree. At our November membership meeting we'll have an outlined summary for your review. Meanwhile, take a look at these general descriptions of members and leadership roles for our chapter.

- Executive Committee is required by national. Each chapter must elect a President, Co or Vice President, Secretary, Treasurer and Membership Chair.
- Committee Leaders and Members are those who take on the logistics of managing Educational Programs, Communications, Development and Member Benefits.
- Volunteers are all the cadre of members who show up to help at meetings, table outreach events, help with the annual Design With Nature Conference and any other calls for service in furthering our mission.
- Participants are those who attend our educational programs, inspirational tours and other chapter activities.
- Supporters are members who agree with Wild Ones mission and want to support our efforts through their membership. Some of our supporters are retirees who helped build our chapter during its infancy.

Interested in learning more about how you can help?

Contact Julia Vanatta or Roz Johnson so we may get to know you better and provide information about various service opportunities.

Julia Vanatta
612-382-2800, texts accepted
juliakay@winternet.com

Roz Johnson
952-847-0967
rjohnson2122@comcast.net